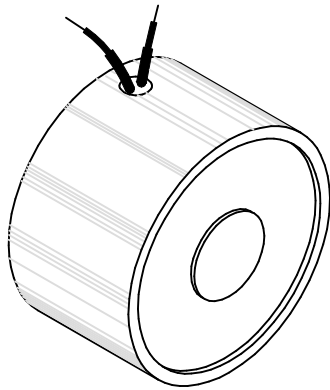


MAGNETIC SENSOR SYSTEMS

Tubular Electromagnet



Series E-09-150
 1 1/2" DIA X 0.87"
 [38.1 mm X 22.1 mm]

TOTAL WEIGHT: 4.8 OUNCES [136 GR]

duty cycle	1 (100%)	1/2 (50%)	1/4 (25%)	1/10 (10%)
maximum "ON" time, (Sec.)	∞	600	180	45
watts	3	6	12	30
approximate ampere turns	840	1180	1670	2650

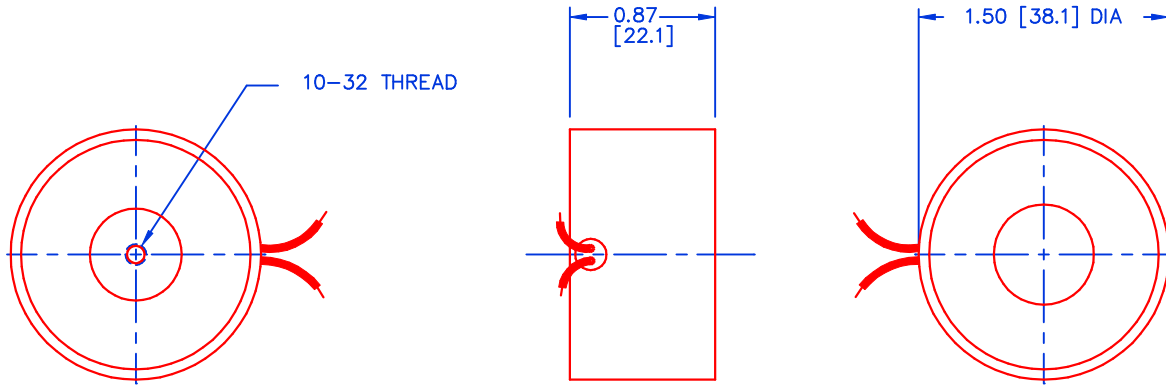
AWG number	resistance (Ω)	volts DC	volts DC	volts DC	volts DC
24	2.6	2.7	3.9	5.4	8.6
25	4.1	3.4	4.8	6.8	10.8
26	6.5	4.3	6.1	8.7	13.7
27	10.0	5.4	7.6	10.8	17.1
28	15.9	6.9	9.7	13.8	21.8
29	25.3	8.6	12.2	17.2	27.2
30	48.1	12.5	17.6	24.9	39.4
31	63.7	13.8	19.6	27.7	43.8
32	95.7	17.1	24.2	34.3	54.2
33	155	21.8	30.8	43.5	68.9
34	244	27.6	39.1	55.2	87.4
35	394	35.0	49.5	70.0	110.7
36	606	43.9	62.1	87.8	138.8
37	1017	54.1	76.6	108.3	171.2
38	1464	68.5	96.9	137.0	216.6
39	2548	89.5	126.6	179.1	283.2
40	4034	114.2	161.5	228.4	361.1
41	5845	139.5	197.3	279.1	441.3

HEAT SINK: For proper heat dissipation, body of electromagnet should be mounted on an equivalent of 3.0" x3.0" x 1/8" metal plate in an unrestricted flow of air.

MAGNETIC SENSOR SYSTEMS

E-09-150

MECHANICAL DIMENSIONS



TOLERANCES: (UNLESS NOTED)
 0.XXX: ± 0.005
 0.XX : ± 0.010
 X/X: $\pm 1/64$
 COIL RESISTANCE: $\pm 10\%$
 DIMENSIONS IN INCHES [mm]

TYPICAL HOLD FORCE VERSUS INPUT POWER

